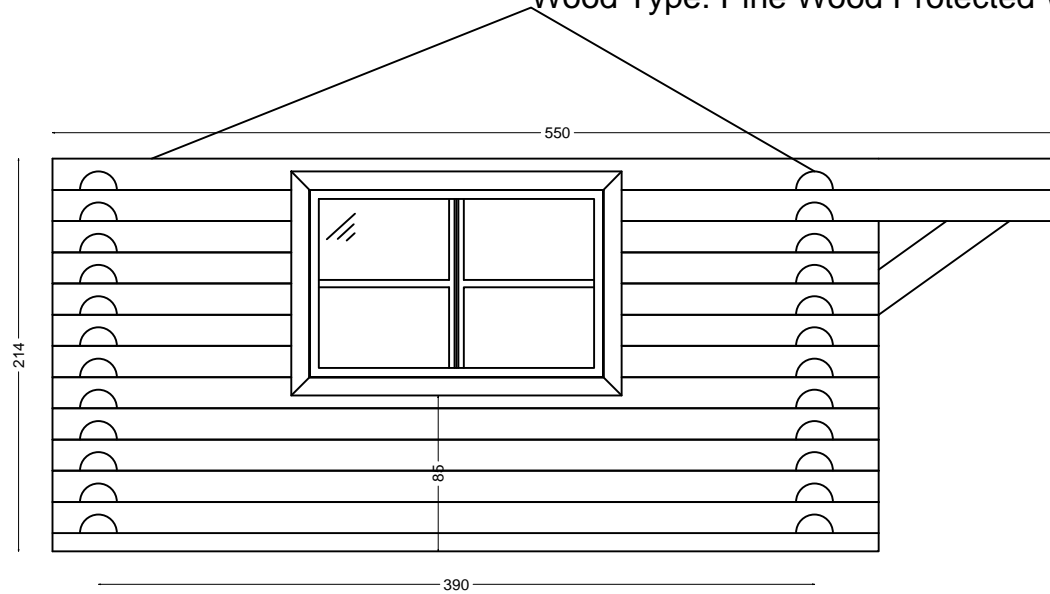


GENERAL NOTES:

Wood Type: Pine Wood Protected With Antiseptic Liquid



Elevation 2

REVISIONS

NO.	DATE	DESCRIPTION	BY

PROJECT:

CLIENT NAME:
ITALIAN AGENCY FOR DEVELOPMENT
COOPERATION (AISC)

LOCATION:
Ain Zhalta

PLOT NO:

DRWG. TITLE:
Wooden Cabin
Elevation 2

SCALE: DWG. NO. 4

Date: SHEET NO. 3

CIVIL ENGINEER
Wael Bahjat Halawi



Shouf Cedar Reserve

DESIGN
STUDY
EXECUTION
SUPERVISION

Tel: +961 81 718 398
+961 5 350250/114
Park house, Maasser EL SHOUF, Lebanon
e-mail: wael@shoufcedar.org